

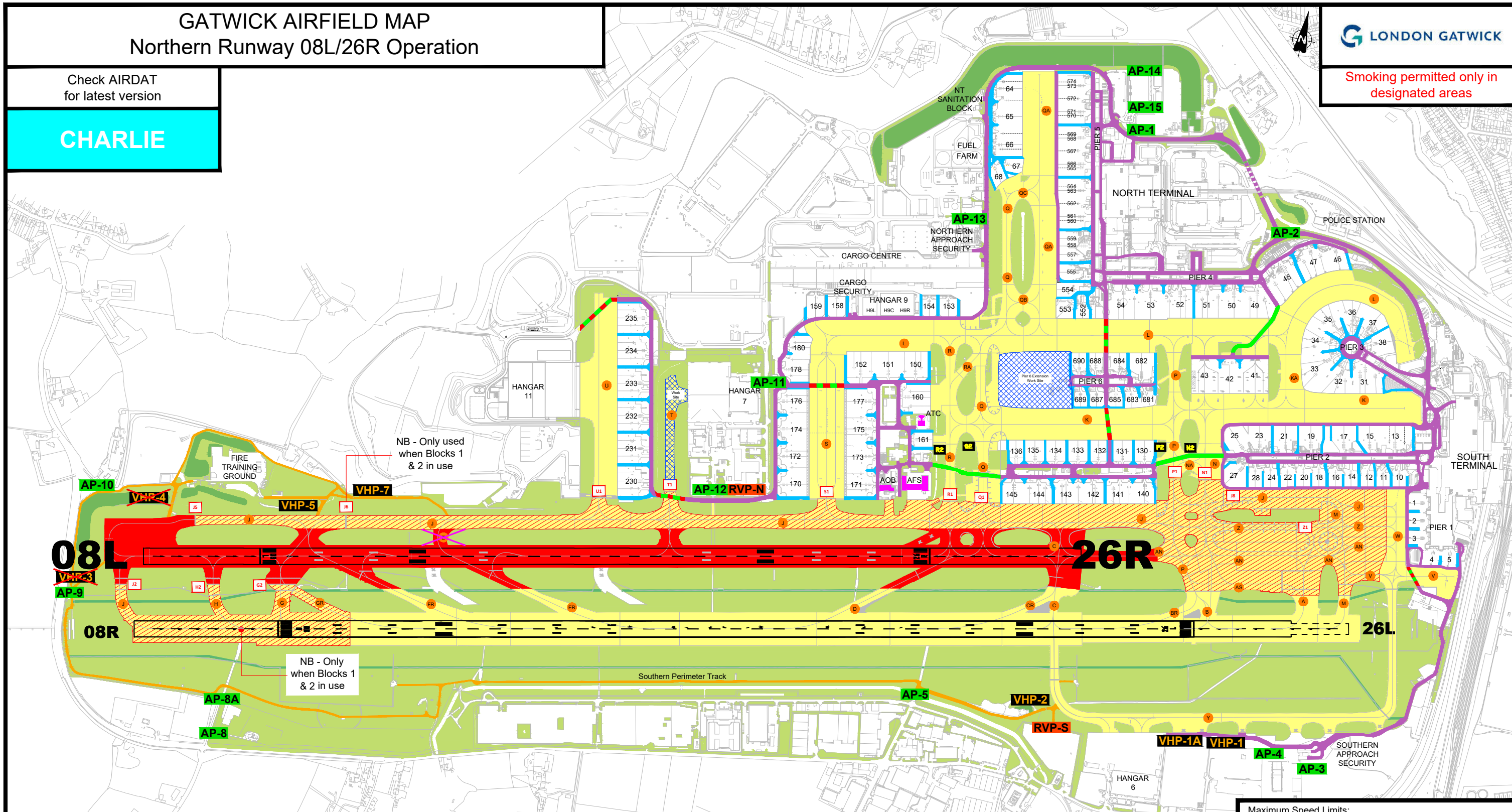
# GATWICK AIRFIELD MAP

## Northern Runway 08L/26R Operation

Check AIRDAT for latest version

**CHARLIE**

Smoking permitted only in designated areas



Refer to Ground Movement Control (GMC) Map for GMC Areas and Frequency Change Boundary

Contact Telephone Numbers:

Emergency 222 (from Stand telephone)  
Emergency 01293 501222 (from a mobile)

ALL airside incidents must be reported via one of the above numbers

Airfield Operations 3090 (from Stand telephone)  
Airfield Operations 01293 503090 (from a mobile)  
ATC 01293 601031  
Engineering Faults 1111 (from Stand telephone)  
Engineering Faults 01293 501111 (from a mobile)

Key:

- Northern Runway 08L/26R:  
No Free Ranging at any time - Controlled by ATC Tower
- No Free Ranging at any time:  
Controlled by ATC Tower
- Manoeuvring Area:  
Only AirOps, AFS, AirEng and Tug drivers with a valid Manoeuvring Area licence are permitted to drive on the Manoeuvring Area
- Airfield Perimeter Track (Max. Speed 20mph)  
(Manoeuvring Area Licence Holders Only)

- Airside (Service) Road
- Interstand Clearway
- Taxiway Crossing - Controlled
- Taxiway Crossing - Semi-Controlled
- Taxiway Crossing - Uncontrolled  
(Uniform South - Contractor Access Only)
- Taxiway Designation
- Rendezvous Point (RVP)

- Intermediate Taxiway Holding Position  
(Inbound Aircraft)
- Northern Runway Holding Position
- Access Point (AP)
- Vehicle Holding Point (VHP)
- Vehicle Holding Point (VHP)  
Not Available During NR Operation
- Taxiway Echo (E)  
Not Available During NR Operation

Maximum Speed Limits:

Airside Roads/Crossings	20 mph (or as locally signed)
Interstand Clearways	5 mph
Manoeuvring Area	40 mph

ATC Radio Frequencies

GMC - North	121.540MHz
GMC - South	121.805MHz
Standby (As directed by ATC)	134.230MHz
Tower	124.230MHz

All vehicles must maintain a Listening Watch with ATC whilst driving on the manoeuvring area

It is the responsibility of all 'M & R' permit drivers to ensure that they are fully conversant with the split GMC frequencies and boundaries as appropriate before entering the manoeuvring area