

**Materials Required:**

- Nesting station (allocated computer for nesting)
- CorelDraw
- SignLab
- Access to the server
- Pen and notepad (for any notes you might need writing)

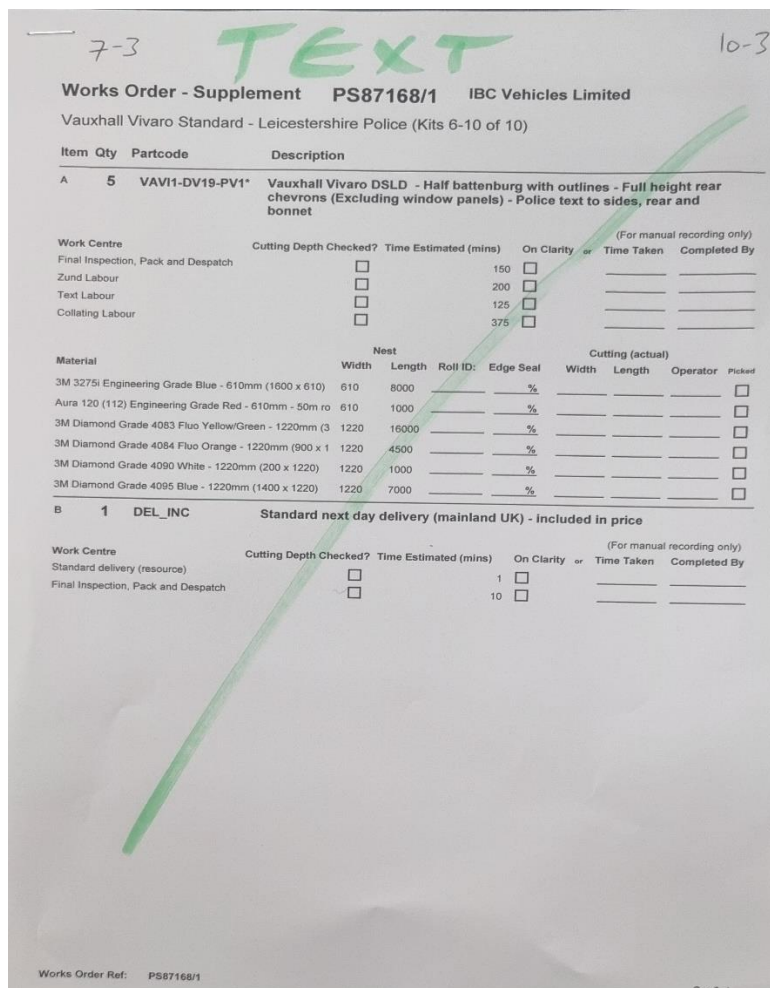
In most cases it will be either nesting text for full kits or nesting text for crash parts. This work instruction will cover both.

1. Nesting text for full kits.

Navigate to the folder of the job you need to nest the text for and open the .cdr CorelDraw file. For this work instruction we will be using a five up Vauxhall Vivaro as an example.

As you can see in the picture below, we need to nest the equivalent of 5 full kits worth of text for this job.

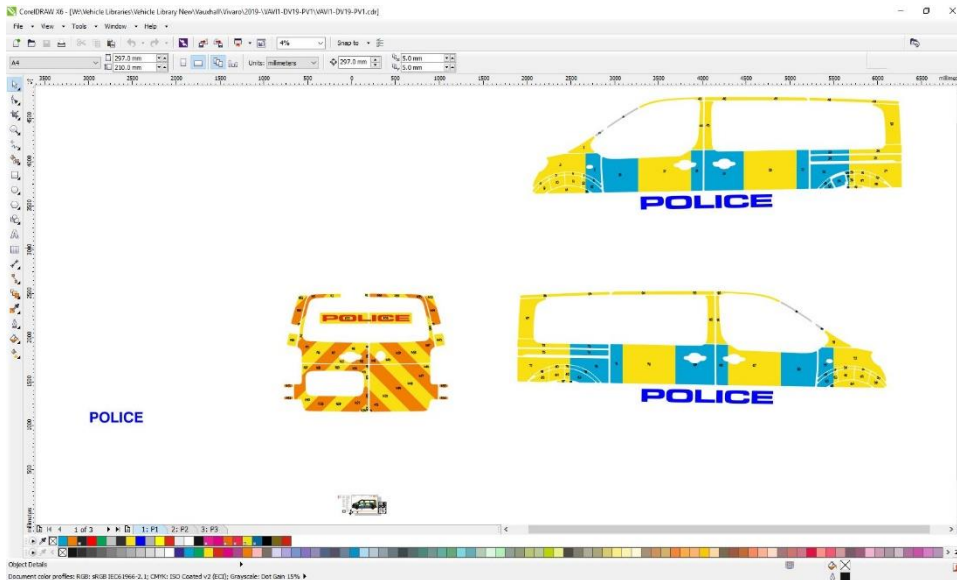
You can also see that there are 2 dates written at the top of the page. The date on the top left corner tells you the date of where you can find the nest for this job, and the top right date tells you the date of when this job needs to be completed by.



Pic1

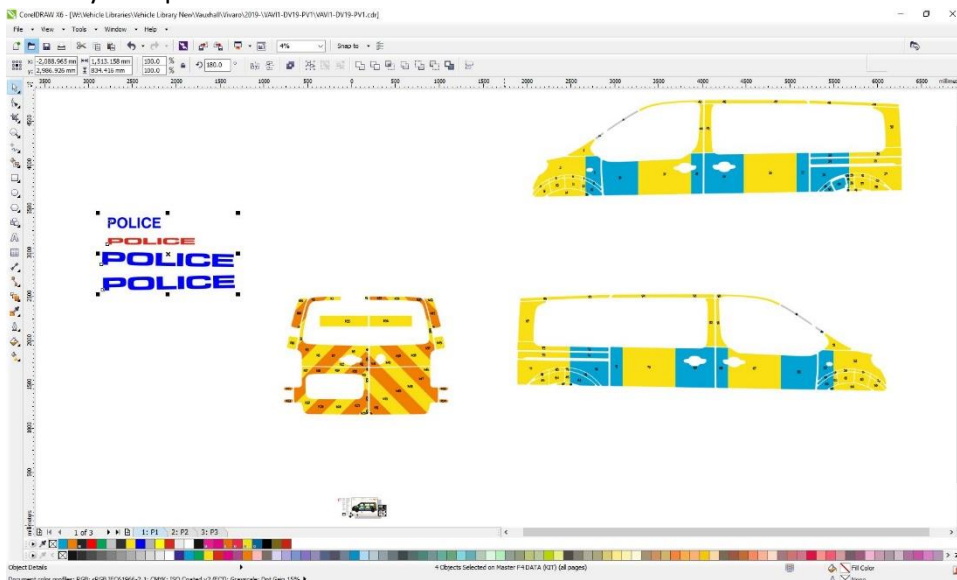
You can start by navigating to the folder of the drawing reference from that job and open the .cdr CorelDraw file that matches the same drawing reference.

Once you opened the CorelDraw file, you will be seeing the visual of that drawing reference. Press the F4 key which will zoom out so you can see all the data in that file. See picture 2.



Pic 2

By looking at the visual from your job bag, select all the text needed for that job and move it out the way. See picture 3.

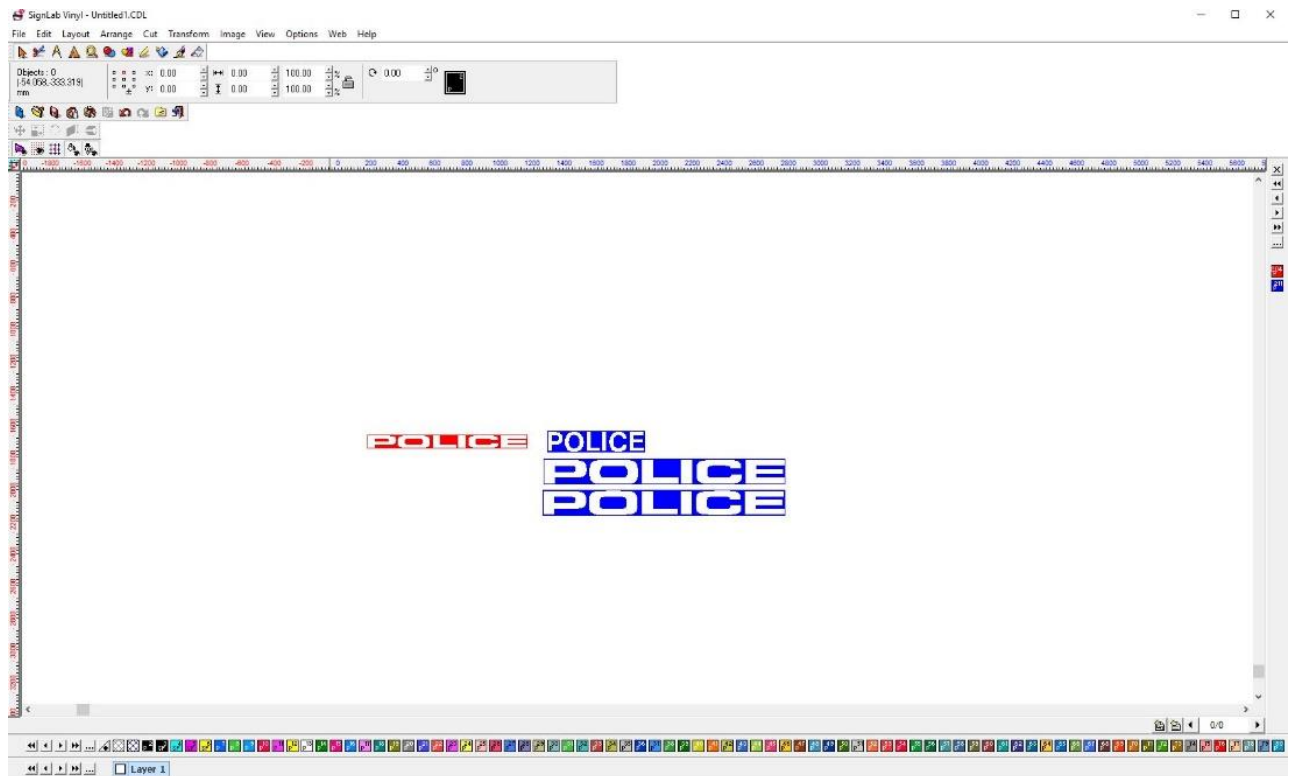


Pic 3

Select all the text elements you need for the job and copy it to SignLab.

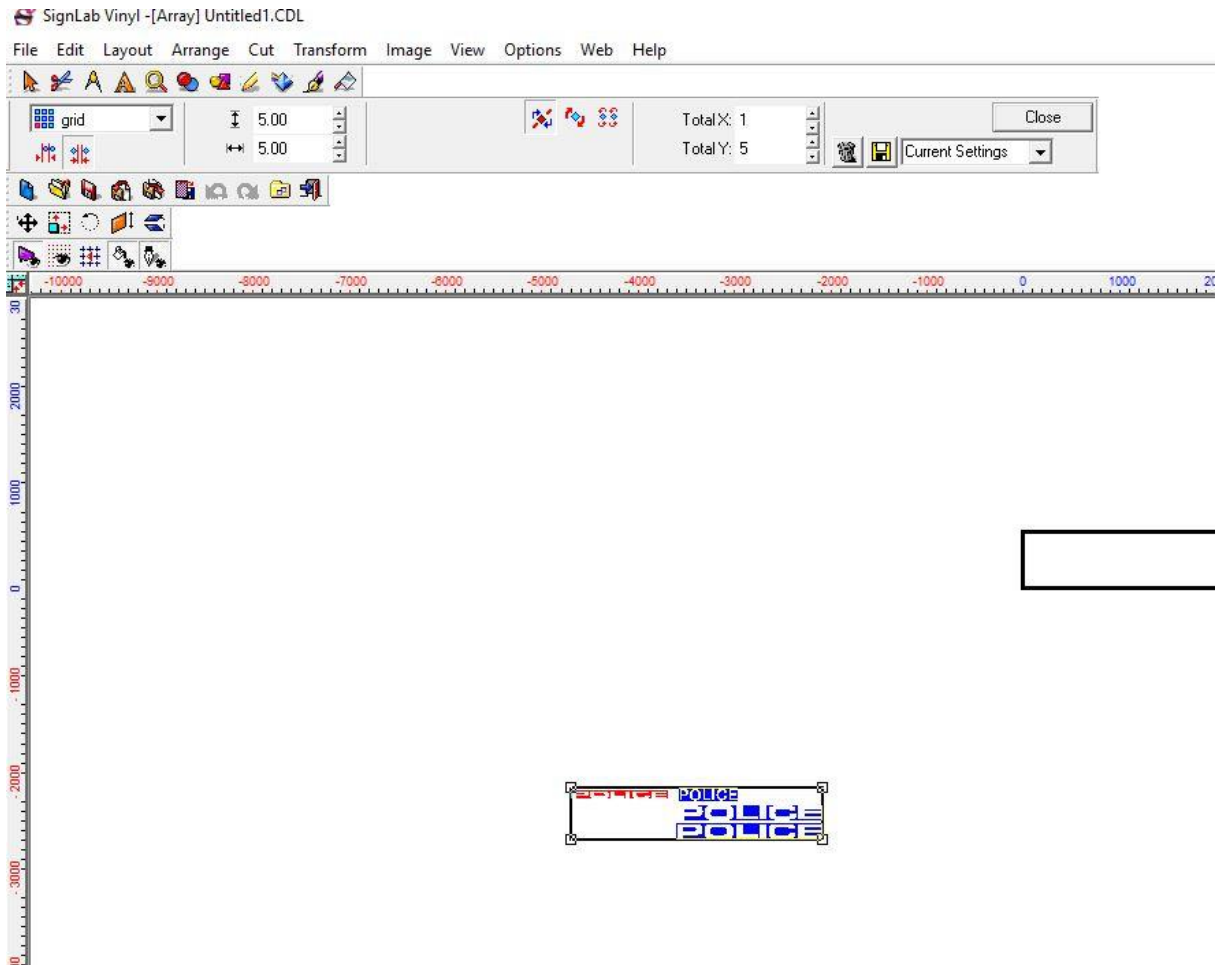
Now you need to create a weed border around the text, and you can do this by selecting an individual bit of text and by pressing ctrl+W and then apply. To apply the weed border to the text you need to select the bit of text together with the weed border and press ctrl+H.

Repeat this process for all the text elements needed for this job. After you finish, the text should look like in the picture below. See picture 4.



Pic 4

After you created the weed border around your text, you can multiply this by the quantity needed on your job bag. You can do this by selecting all the text that needs multiplying, right-click on the text and click on Array. At the top you will see that a new menu appeared. If you change the number under TotalX to 5, it will multiply the text selected five times on the X axis. If you change the number under TotalY it will multiply the text selected on the Y axis. See picture 5.



Pic 5

After you change the quantity press Cancel and it will multiply the text for you.

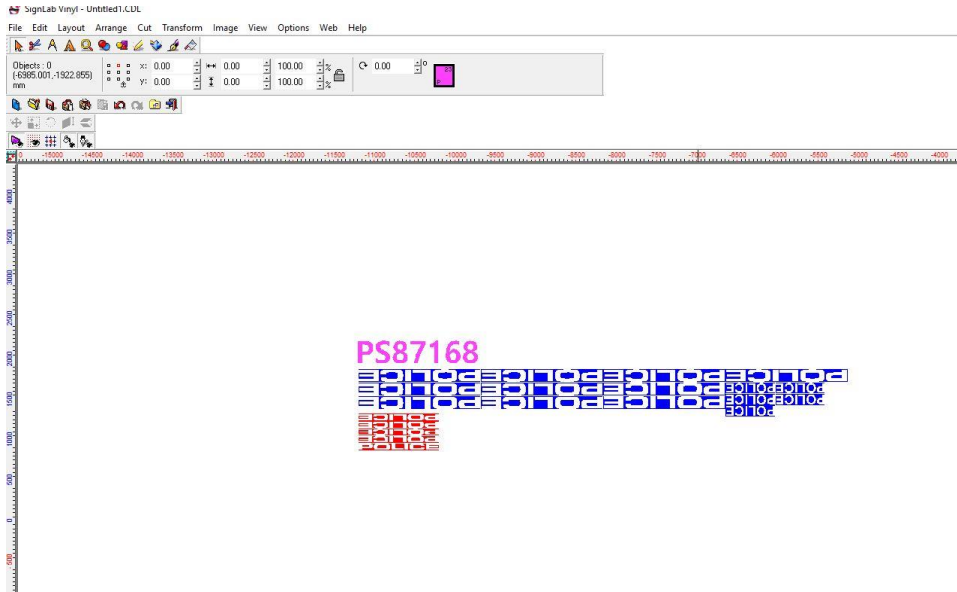
Now that all the text we need for the job is set up, we need to nest it, but before doing this we need to check our blank size, which is the width of our nest.

Go to the top menu and click on Layout, and then BlankSize. In this menu, at dimensions, you can write down the size of the material you need to nest these text elements on and press ok.

Select the text you want to nest and, on the top menu, click on Arrange and then click on Block Nesting, and apply.

Move this out the way and do the same on all different color materials for that job.

Once you nested all the text, bring it together so it is organized and by using the text tool from the top of the page write the PS number of the job and place it in top of the nest so the person cutting it will know what job the text is for. See pic 6.



Pic 6.

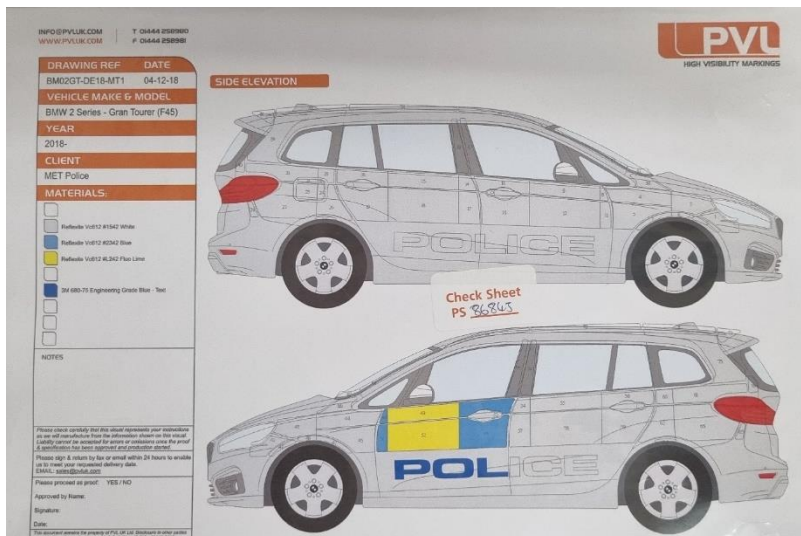
Now you can save the SignLab file with your nest in the daily text folder. This is located here > W:\Text\2022\MARCH, as you can see, we save it in a Text folder under the year, month and we name the file as the date on which it was nested. Now write this date on the top left of the first page of the text job bag and your text is done.

2. Nesting text for crash parts.

The process in nesting crash parts is very similar to the one on nesting full kits.

By following the steps above, open the .cdr file of the drawing reference you want to nest.

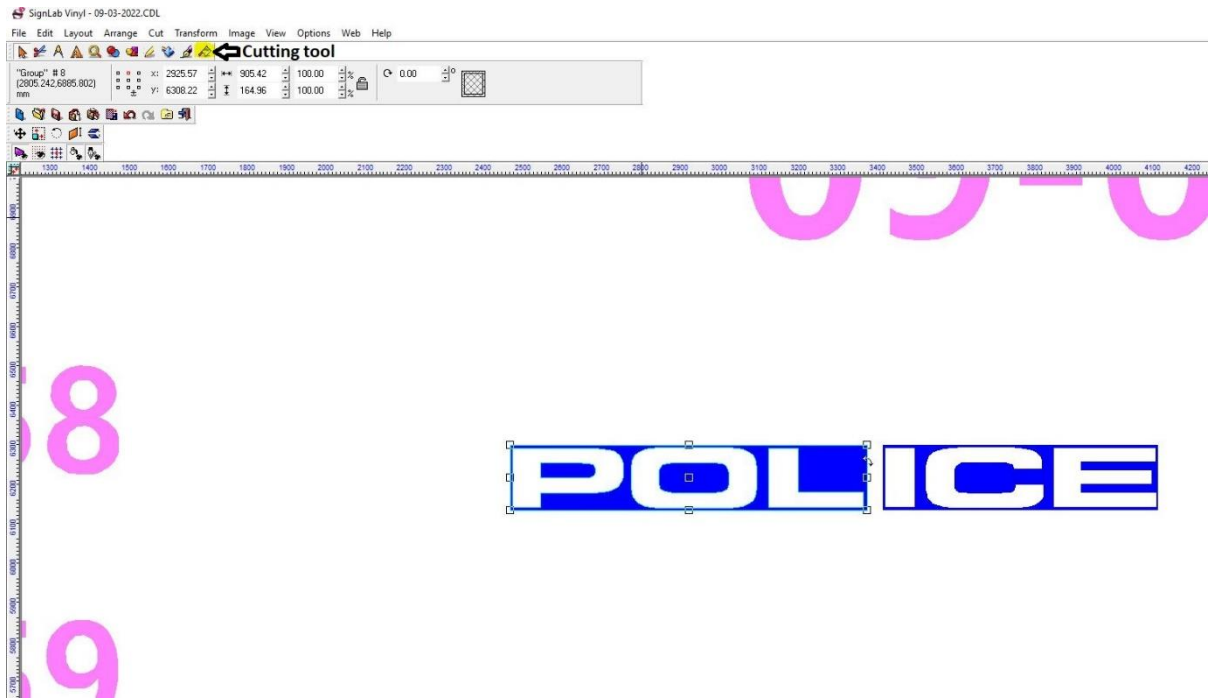
Crash part job bags will have the items required in the description of the job bag and on the visual. The elements of a job that are not needed get deleted so on the visual you can only see the elements of the job that are needed. See picture 7



Pic7

As you can see in picture 7, we only need the “POL” text from “POLICE” as the customer is only replacing the front door, so there is no need to replace the whole wording “POLICE”

To nest this, you must create a weed border around the word “POLICE”. Please read above on how to create a weed border. After the weed border is created you must cut the “POLICE” text between the letter “L” and “I”. Please see Picture 8.



Pic 8

When cutting the text, you should zoom in using the mouse scroll, so you don't cut through the letters but through the gap in between them.

After the text was cut, save it as explained above.